



Legacy II Custom Series
Standard Equipment
Options & Floor Plans

"Leading the Industry to Excellence"
www.legacysleepers.com

ARI - Legacy Sleepers

860 North Tuscany Drive, P.O. Box 246
Shipshewana, IN 46565
Phone: (260) 768-4704 Fax: (260) 768-4983
www.legacysleepers.com
"Leading the Industry to Excellence"

Legacy II Custom Series

Sleeper Sizes & Models

REAR DOOR FRONT SHOWER (RDFS)

132" RDFS/RDFSUC (2,847 lbs)
 144" RDFS/RDFSUC (3,099 lbs)

156" RDFS/RDFSUC (3,351 lbs)
 168" RDFS/RDFSUC (3,624 lbs)

REAR DOOR REAR SHOWER (RDRS)

97" RDRS (2,090 lbs)
 108" RDRS (2,343 lbs)

120" RDRS (2,595 lbs)

REAR BED (RB)

97" RB (1,880 lbs)
 108" RB (2,118 lbs)
 120" RB (2,355 lbs)
 132" RB (2,592 lbs)

144" RB/RBSD (2,844 lbs)
 156" RB/RBSD (3,096 lbs)
 168" RB/RBSD (3,380 lbs)
 180" RB/RBSD (3,621 lbs)

INTERIOR COLOR OPTIONS

ALL INCLUSIVE UPGRADED INTERIOR DÉCOR PACKAGES:

Dark Knight III HFP Havana Rum II HFP Stone Saddle II HFP Antique Slate

Note: All Weights Are Approximate.

Note: Prices, specifications, and included features are subject to change without notice.

Legacy II Custom Series

Exterior / Construction:

- OEM Style Boot Ring
- PACCAR Exterior Doors
- Structure is Pressure & Rain Bay Tested
- Tapered Aluminum Truss Rafters
- 1" x 2" Aluminum Wall Studs
- Meets Mercer Trans. Rear Wall Specifications
- ARI Cushion Ride Mounting System
- Fiberglass Wall Insulation - Cut and Fitted
- 3-1/2" Fully Insulated Floor
- Waterproof Smooth Underbelly
- Front Stainless Steel Radius Corners *
- Stainless Steel Aerofront *
- 72" Rear Door w/ Screen and Deadbolt Latch**
- Rear Door Porch Light w/ Interior Switch **
- Prep For Roof Air Conditioner
- Paint With 3 Year Warranty
- 304 Mirror Finish SS (Non-Magnetic)
- Stainless Steel Skirt - No Rivets!
- LED Clearance Lights In SS Skirt with 12" Ctrs
- Prep For Roof Air Foil
- Frame Mount Step**
- Deckplate With Frame Rail Hook Ups**
- LED Glow Grab Handle **
- Prep For 14" x 14" Window In Shower
- Prep For Future Satellite System

Appliance Systems:

- Sound Bar System w/ Sub Woofer, Blu-Ray, HD
- TV Antenna with Booster
- Microwave Oven
- 30 Amp Shoreline - Marine Grade - Heavy Duty
- Automatic Transfer Switch
- 2800 or 1200 Watt Inverter/Charger w/ Remote
- Refrigerator/Freezer
- Interior Water Fill Access - Fill Tank with Jug
- 30 to 36 Gallon Insulated Fresh Water Tank
- City Water Hookup
- Hot Water Heater - 6 Gallon Capacity
- Hot Water Line Filter
- Smoke Detector
- Heater/Air Conditioner & Wall Thermostat
- Auxiliary Heater/Air Conditioner (156" & 168")
- 28" HD LED Flat Panel TV
- Extra HDMI Recepts In AV Cabinet Tied to TV
- Roof Vent With Smoked Exterior Cover
- Rain Cover for Roof Vent

Interior Features:

- Light Weight Aluminum Structure
- Raised Panel Hardwood Door Fronts

Interior Features (continued):

- Hidden Cabinet Door Hinges
- TV Cabinet with Storage Behind TV
- Door Struts In Overhead Cabinets
- Cabinets Lined For Noise Reduction
- Dividers In All Overhead Cabinets
- Entertainment Cabinet
- Recessed Hardwood Shadow Box*
- Seamless Fiberglass Shower With 13 Gal Holding Tank & Bench Style Toilet
- High Press., Water Saving, Shower Head
- Single Lever Shower Faucet Control Valve
- Shower Diverter Valve - Recycle Cold Wtr
- Towel Hooks In Shower
- Corner Tray in Shower
- Hardwood Shower Door with Mirror
- InduraSpring Mattress
- Bed Restraint
- Bed/Dinette w/ Self Storing Table & Self Storing Cushions w/ 80 lb Struts **
- High Density 10 Year Cushion Foam *
- Brass Water Line Fittings
- Premium Water Lines w/ SS Constant Tension Clamps
- Water Pressure Relief Valve
- Water Fill Hose
- Heat and AC to Shower Area
- Soap Dispenser In Shower
- Carbon Monoxide Detector
- Battery Voltage Monitor
- Electrical Wiring Encased in Loom
- GFI Kitchen Receptacle
- USB Receptacle
- Oversized Rocker Light Switches
- LED Light Fixtures
- LED Auto Lights in Wardrobe & Sink Cab.*
- Cedar Floor In Wardrobes
- Undermount Stainless Steel Sink
- Décor High Rise Sink Faucet with Sprayer
- Towel Bar In Sink Cabinet
- Magnetic Strip to Boot Curtain
- Premium Grade Residential Linoleum
- Coat Hooks In Living Area
- Insulated Window Inserts
- Frameless Windows
- 24"x 16" Window w/ Hardwood Trim & Day Night Shade PS*
- Prep For 24"x16"Window on DS*
- Egress Window & Hardwood Trim & Day Night Shade PS (RB Models Only)

*Where Applicable ** Legacy II Rear Door Models Only

Note: Prices, specifications, & included features are subject to change without notice

Legacy II Custom Series

OPTIONS

lbs	
<u>Boot Kits:</u>	
_____	- 2nd OEM Style Boot Ring For Cab Side
_____	- KW Aerocab After Market Kit
_____	- ARI KW Extended Day Cab Kit
_____	185 Volvo/FL/KW/Peterbilt/WS High Cab Conv - Delete
_____	Aerofront & Delete Stainless Steel Front Corners
_____	- Upcharge & Boot Ext. For Non Pete, KW & FL
<u>Interior Modules:</u>	
_____	- U Countertop Layout to PS & 36 x 15 Window
	(RDFS Models Only)
_____	35 Desk with Drawer and Overhead Cabinet In
	Place Cabinet Stack (PS on RDFS 132" &
	144", DS on RDRS 144" and 156" Only)
_____	195 Bed Dinette With Self Storing Table, Self Storing
	Cushions & Bed Struts, Delete Fixed Rear Bed
_____	10 Add (2) Wedge Cushions to Dinette Seats
_____	150 Side Entry Door & Stepwell Layout to Pass Side
	With Flip Down Flush Floor, Flip Up Counter,
	& LED Grab Handle, LED Exterior Light, and
	Electric Exterior Step (RB Only 144" & Up)
_____	- Upgrade to Linoleum In Stepwell Area
_____	- LED Strip Lighting to Stepwell Threads - Blue
_____	15 Upper Bunk In Place Of Rear Overhead Cabinets
	Not Avail. w/ Bed Dinette Option (RB Models Only)
_____	35 Electric Upper Bunk With Remote Panel In Place
	of Overhead Cabinets.
_____	150 Washer Dryer In Place of Wardrobe Below
	Countertop (120"-156" RDRS Models Only)
<u>Interior Options:</u>	
_____	10 Microwave/Convection Oven *
_____	1 Sink Cover/Cut Board (Non Solid Surface Only)
_____	15 2nd Fresh Water Tank To Interior Cabinet Space
_____	2 Tank Monitor - Fresh Water Tank
_____	5 Med. Cab. w/ Mirror & Adj. Shelf (108" & Up)
_____	70 Backsplash - Mirror Finish Stainless Above Countertop
_____	5 Backsplash - PVC Tile Above Countertop Area
_____	36 Backsplash - Glass Tile Above Countertop Area
_____	15 Upgrade Solid Surface Countertop (97" & 108")
_____	23 Upgrade Solid Surface Countertop (120" - 168")
_____	10 Upgrade Solid Surface Gaucho Table
_____	8 Solid Surface Sink Cover
_____	8 Recess Cooktop with Solid Surface Cover
_____	10 Single or Double Induction Cooktop
_____	- Upgrade To Roof Vent w/ Wireless Remote
_____	1 Hardwood Trim To Roof Vent
_____	3 Hardwood Trim To Refrigerator Opening
_____	35 Add 3 Drawers To Wardrobe Closet
_____	13 Upgrade To 32" Wide Screen LED TV, High Def.
_____	20 Upgrade To 43" Wide Screen LED TV, High Def. (RBSD)
_____	33 Sat. Sys. (IM) Dish Net, HD Ready
_____	3 Upgrade Sat. Receiver to DVR
_____	1 Vinyl Mattress Curtain
_____	- Upgrade To Memory Foam Mattress
_____	45 Upgrade To Hardwood Dinette Bases
_____	- Oversize Bed Area to 54"/Reduce Cabinet & Counter
	Space, Oversize Window - 156 & 168 RB Only
_____	4 Add LED Soft White Strip Lighting To All OHC's
_____	1 Décor Light Mounted On Ceiling (108" & Up)
_____	1 Décor Reading Light In Main Bed Area
_____	- Dimmer Switch For Ceiling Lights
_____	- Dimmer Switch For Bed or Dinette Lights
_____	1 LED Strip Light Below Countertop Lip (Blue)
_____	15 Ceiling Lgt Package - Wood Trim, Mirrors, LED Strip Lts

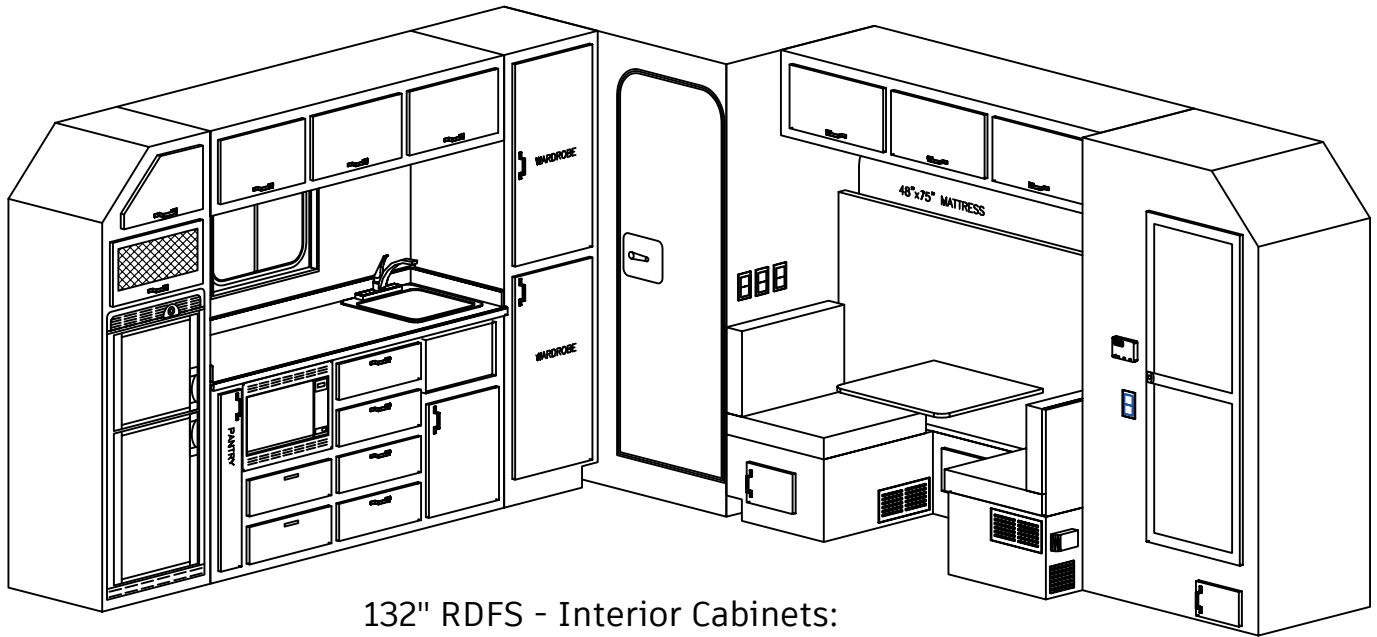
lbs	
<u>Interior Options (Continued):</u>	
_____	1 LED Strip Light Below the Rear Door (Blue)
_____	3 LED Strip Light in Shadow Box (RD Models Only)
_____	10 3 Console Switch Control Panel System
_____	- 3 Way Switch In Cab Tied To Counter Lights
_____	9 Baseboard Heater 110 Volt - ARI Std Location
_____	30 Install Customer Supplied (C/S) Diesel Heater
<u>Equipment Options:</u>	
_____	530 Onan Quiet Diesel 7500 Watts 3 cyl w/ SS Box
_____	n/a Onan Auto Generator Start with HVAC
_____	35 Wire For Future Generator
_____	- Onan Start/Stop Switch to Cab Dash Panel
_____	55 (2) Golf Cart Batteries With Solenoid
_____	93 Roof AC with Ducted Air & Heat Strip
_____	5 Heating Sys. For Wtr Lines - 90 Day Limited Warr.
<u>Exterior Options:</u>	
_____	- Special Color Paint (Non White)
_____	30 Fiberglass Wind Deflector
_____	23 Side Fairing DS & PS
_____	35 U-Shaped Side Fairing Overall
_____	90 3 Bag Air Ride System (120" & Under)
_____	110 5 Bag Air Ride System (132" & Up)
_____	45 Cabmate Air Ride For Tractor
_____	2 Ride Control Valves for Air Ride System
_____	110 Stainless Steel Tool Box 40" With 1 Door
_____	33 Oversize 40" Box To 52" With 2 Doors
_____	110 Stainless Steel DEF Tank Cover 20" to 30"
_____	4 Stainless Steel Below Cab Doors
_____	10 Stainless & 2 Clearance Lights to Side Entry Door
_____	5 Stainless Filler Panel to Front of Side Entry Door
_____	- Stainless Steel Front Wall
_____	- Stainless Steel Rear Wall Flat
_____	- Stainless Steel Rear Wall With 4" Pleats
_____	- Stainless Steel Rear Wall With 6" Diamonds
_____	34 Stainless Steel Fairing Enclosures DS & PS
_____	51 U-Shaped Stainless Steel Fairing Enclosures
_____	16 Stainless Steel Below Top Clearance Lights
_____	30 Deckplate With Super Step (RB Models Only)
_____	10 Paint & Install Customer Qual. Bracket & Cable
_____	75 Awning, Electric, 12' Length, 144" and Up
<u>Exterior Lights:</u>	
_____	8 LED Clearance Lights Top Of Sleeper (Bottom Std)
_____	2 6 LED Clearance Lights Below Cab Doors
_____	1/2 1 Pair LED Load Lights (Red)
_____	1/2 1 Pair LED Load Lights (Clear/White)
_____	4 Wire Red Load Lights - Stop/Turn/Tail
_____	3 1 Pair Docking Lights - Various Std Locations
_____	2 5 LED (1-3-1) Bus Lights (108" & Up)
_____	2 5 LED (1-3-1) Bullet Lights (108" & Up)
_____	- Upgrade 5 Bus Or Bullet Lights To Clear Lense
_____	- Upgrade Clearance & Load Lights To Clear Lense
<u>Exterior Doors:</u>	
_____	18 Tool Compartment Door DS Rear (RB Model Only)
_____	14 Full Door In Place Of Egress Window On PS
<u>Windows:</u>	
_____	6 14" x 14" Frameless Window In Optional Full Door
	On PS With Wood Trim & Shade (RB Model Only)
_____	2 14" x 14" Frameless Window In Shower
_____	8 30" Framed Aero Window With Trim & Shade
_____	8 24" x 16" Frameless Window DS With Trim & Shad
_____	2 14" x 14" Frameless Window in Rear Door
<u>OTHER:</u>	
_____	- Upgrade to Spray Foam Insulation

Note: All weights are approximate.

* - Microwave/Convection Oven REQUIRES Generator or Shoreline.

Note: Prices, specifications, and included features are subject to change without notice.

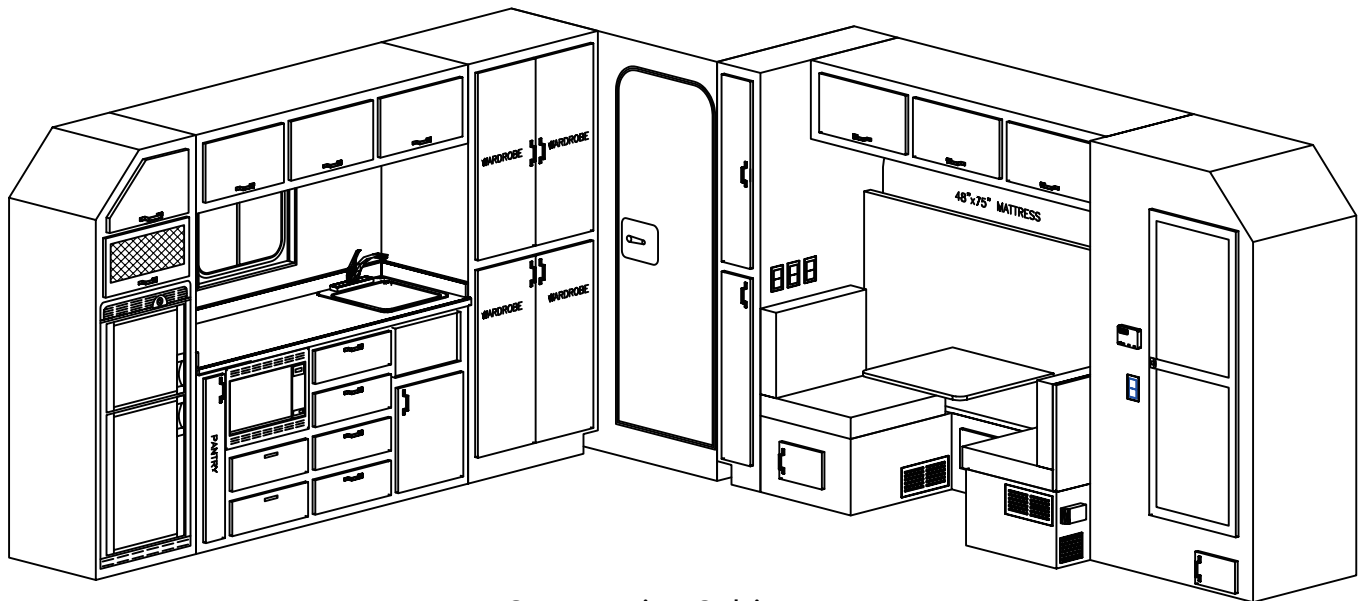
132" REAR DOOR - FRONT SHOWER (RDFS)



132" RDFS - Interior Cabinets:

- * 6 Drawers under counter
- * PS & DS overhead cabinet
- * (2) Wardrobes PS
- * A/V cabinet
- * Pantry w/ pull-out shelves

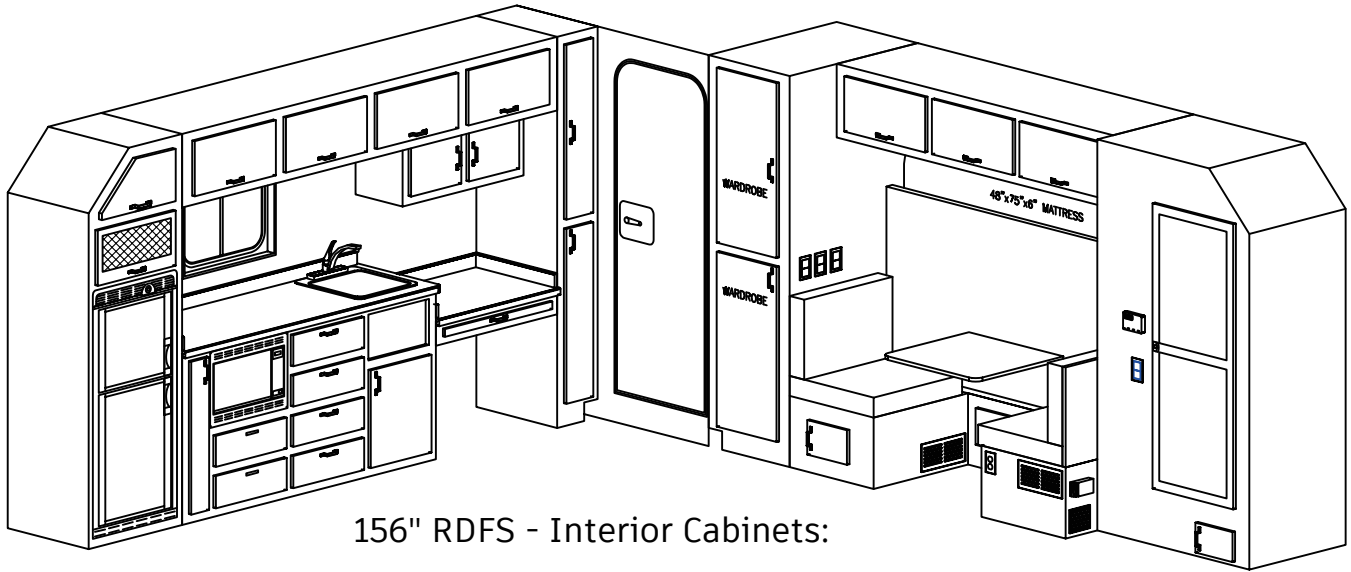
144" REAR DOOR - FRONT SHOWER (RDFS)



144" RDFS - Interior Cabinets:

- * All 132 RDFS cabinets *plus* more space
- * Additional 12" of wardrobe space
- * (2) Single door cabinet w/ adjustable shelves (DS wall)

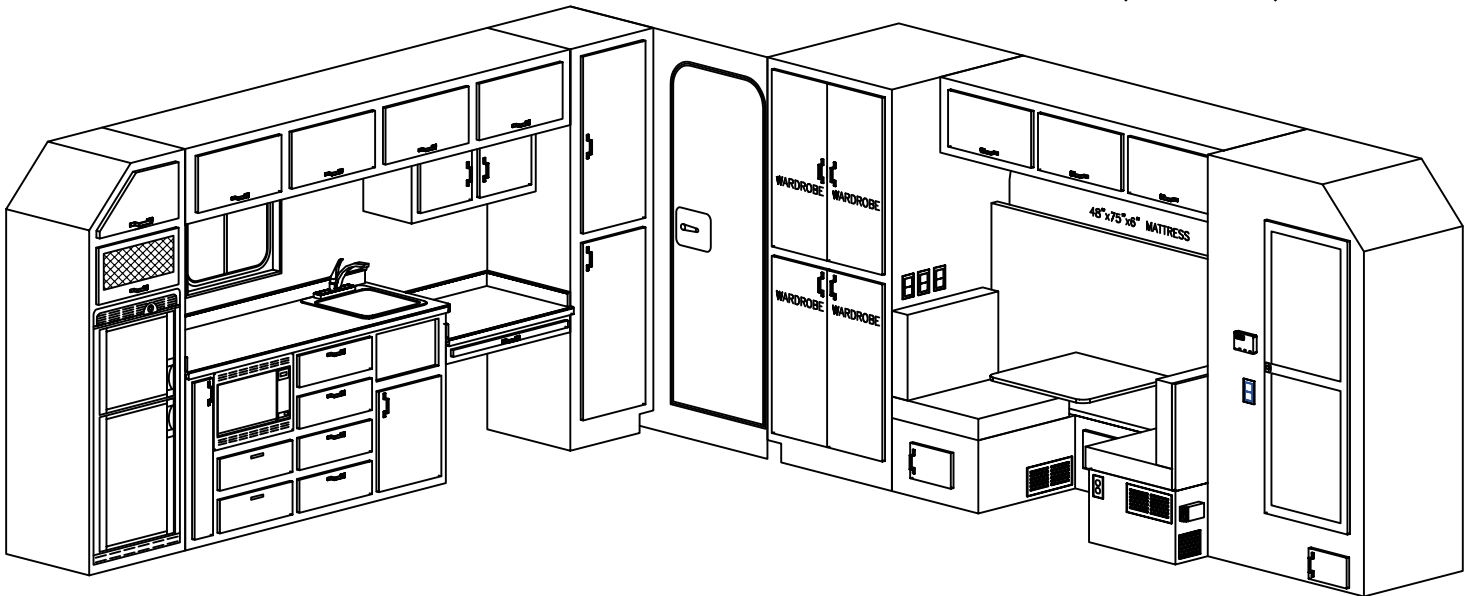
156" REAR DOOR - FRONT SHOWER (RDFS)



156" RDFS - Interior Cabinets:

- * 6 Drawers under counter
- * PS & DS overhead cabinet
- * (2) Wardrobes PS & DS rear wall
- * (2) Single door cabinet w/ adjustable shelves (DS wall)
- * A/V cabinet
- * Pantry w/ pull-out shelves
- * Office space w/ large desk
- * Two door cabinet over desk

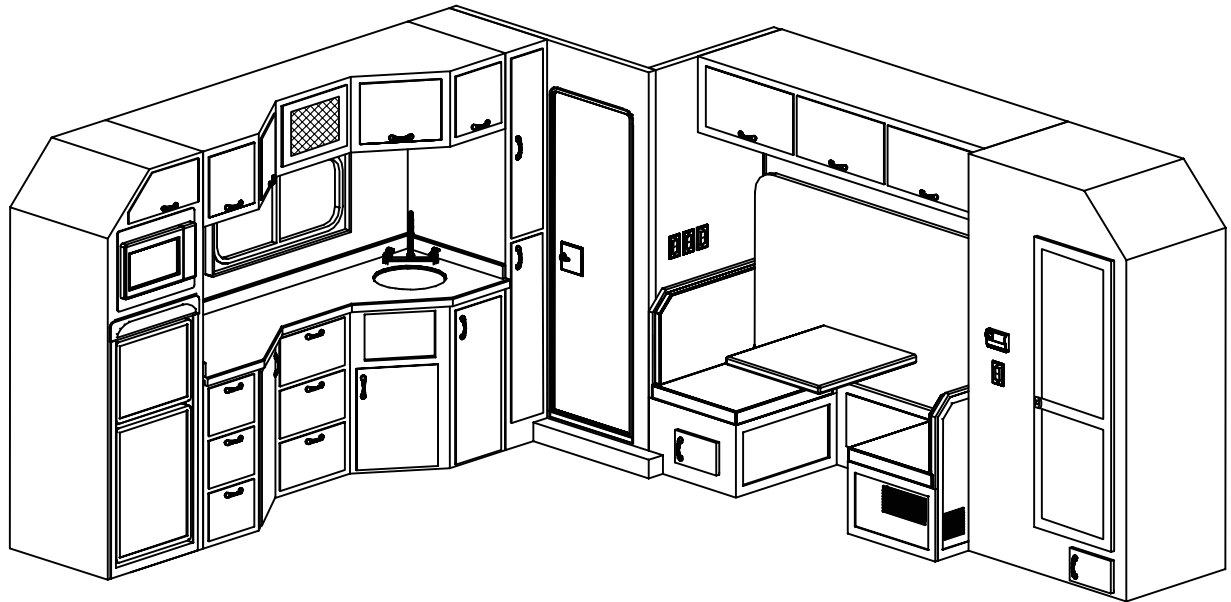
168" REAR DOOR - FRONT SHOWER (RDFS)



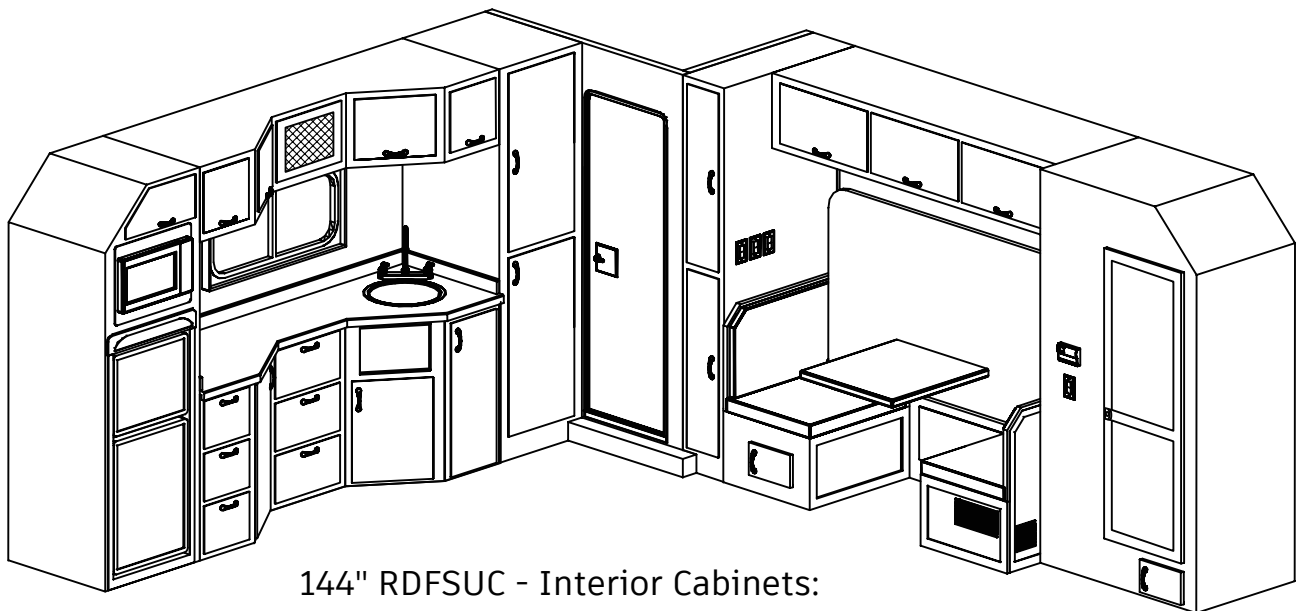
168" RDFS - Interior Cabinets:

- * All 156 RDFS cabinets *plus* more space
- * Additional 12" of wardrobe space
- * Additional 12" of cabinet space top & bottom

132" REAR DOOR - FRONT SHOWER W/ U-SHAPED COUNTERTOP (RDFSUC)



144" REAR DOOR - FRONT SHOWER W/ U-SHAPED COUNTERTOP (RDFSUC)

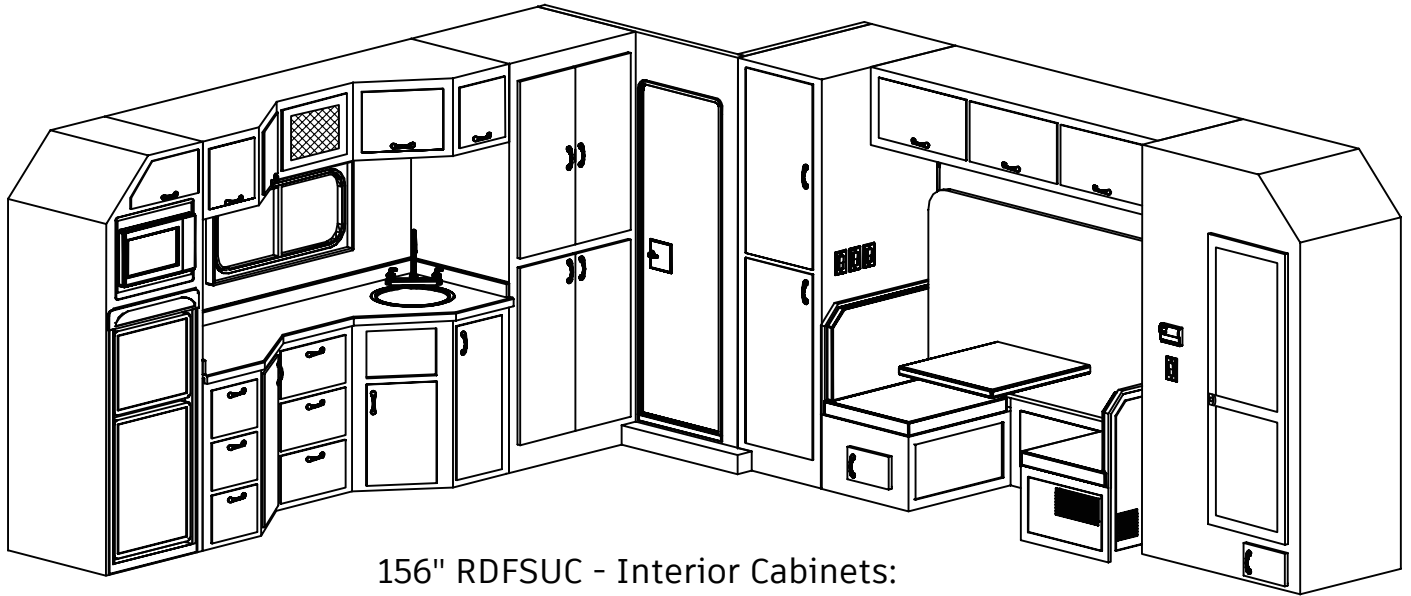


144" RDFSUC - Interior Cabinets:

* All 132" RDFSUC cabinets *plus* more space

* Additional 12" of cabinet space driver & passenger side

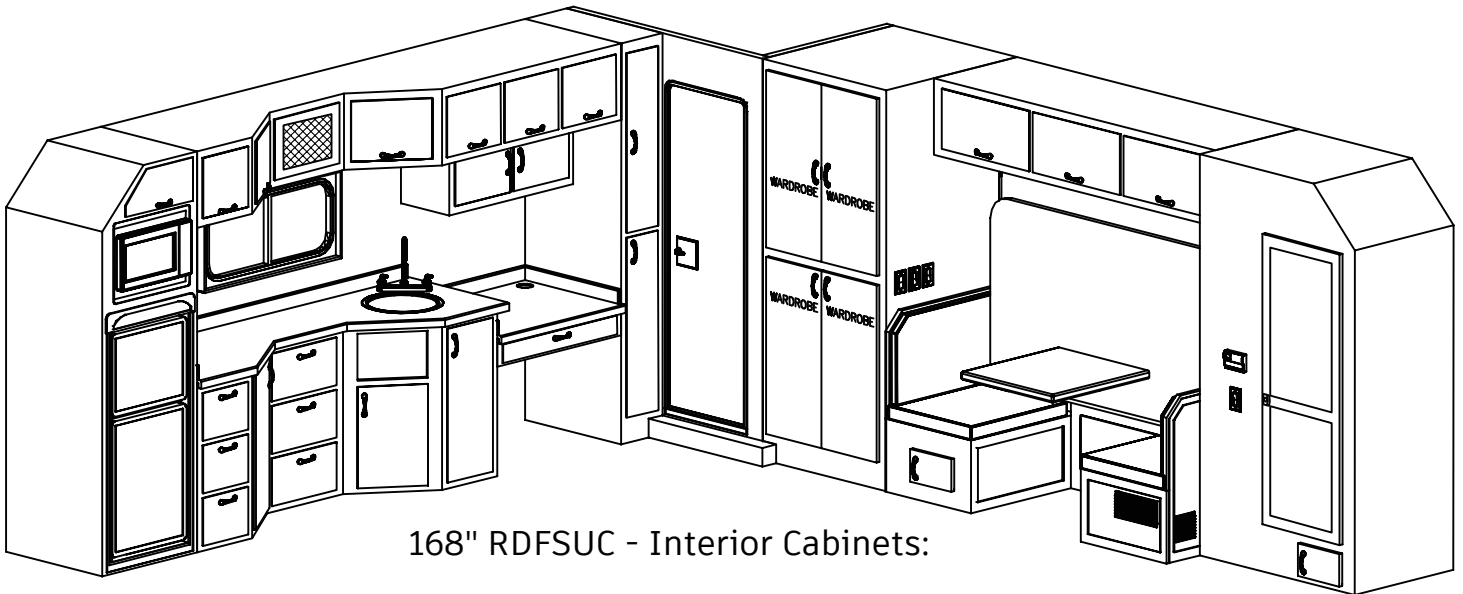
156" REAR DOOR - FRONT SHOWER W/ U-SHAPED COUNTERTOP (RDFSUC)



156" RDFSUC - Interior Cabinets:

- * All 144" RDFS cabinets *plus* more space
- * Additional 12" of cabinet space driver & passenger-side

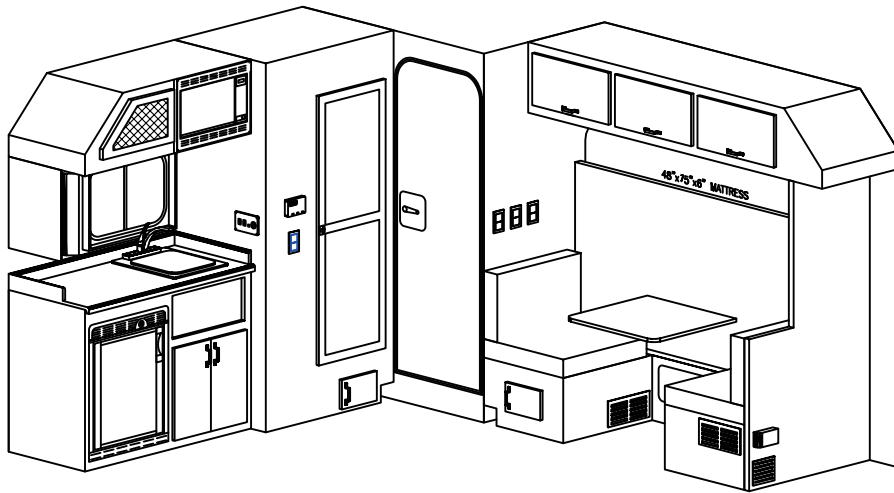
168" REAR DOOR - FRONT SHOWER W/ U-SHAPED COUNTERTOP (RDFSUC)



168" RDFSUC - Interior Cabinets:

- * All 156" RDFSUC cabinets *plus* more space
- * Additional 12" of cabinet space drives-side
- * Large Desk & two door cabinet on passenger-side

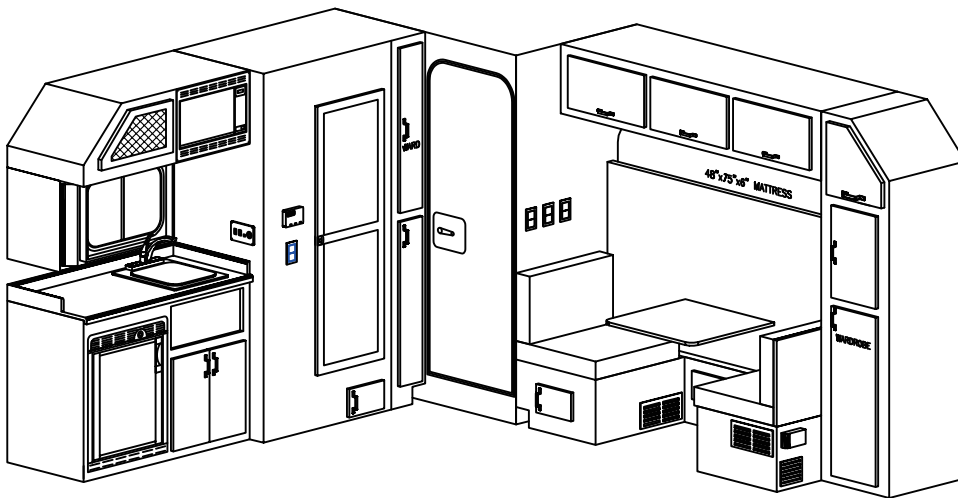
97" REAR DOOR - REAR SHOWER (RDRS)



97" RDRS - Interior cabinets:

* Overhead cabinets on DS

108" REAR DOOR - REAR SHOWER (RDRS)



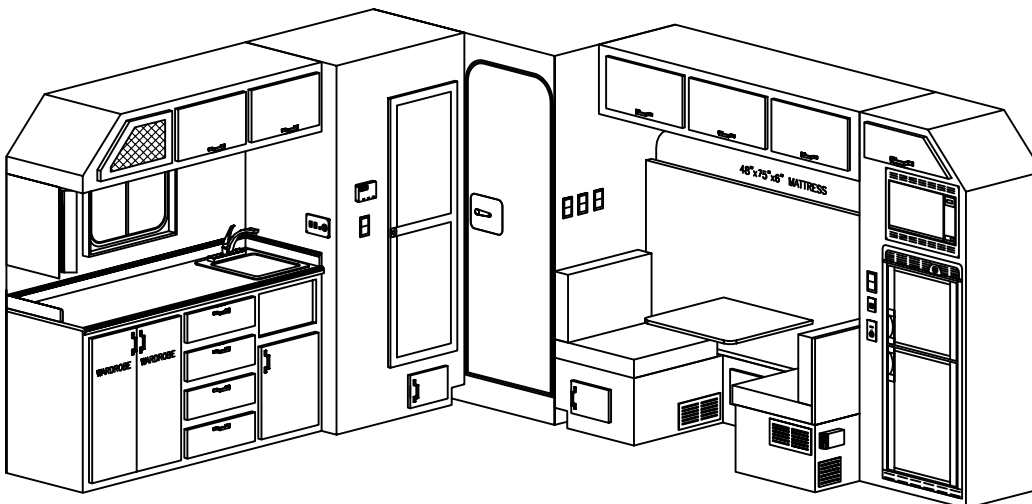
108" RDRS - Interior cabinets:

* All 97" RDRS cabinets *plus* more space

* Wardrobe & single door cabinet on DS

* Wardrobe and single door cabinet w/ adjustable shelves on PS

120" REAR DOOR - REAR SHOWER (RDRS)



120" RDRS - Interior cabinets:

* All 97" RDRS cabinets *plus* more space

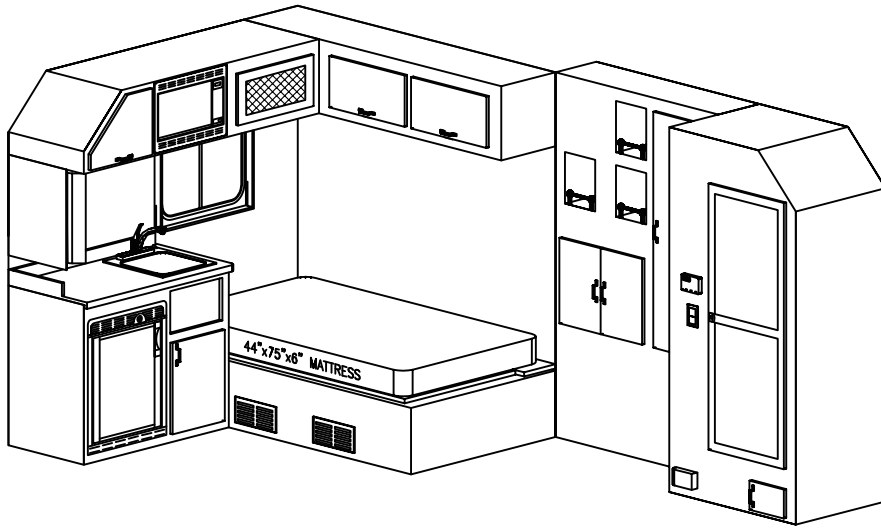
* Larger refrigerator

* Larger countertop w/ 4 drawers & two door wardrobe below

* Two door overhead cabinet PS

* Shadow box in dinette area

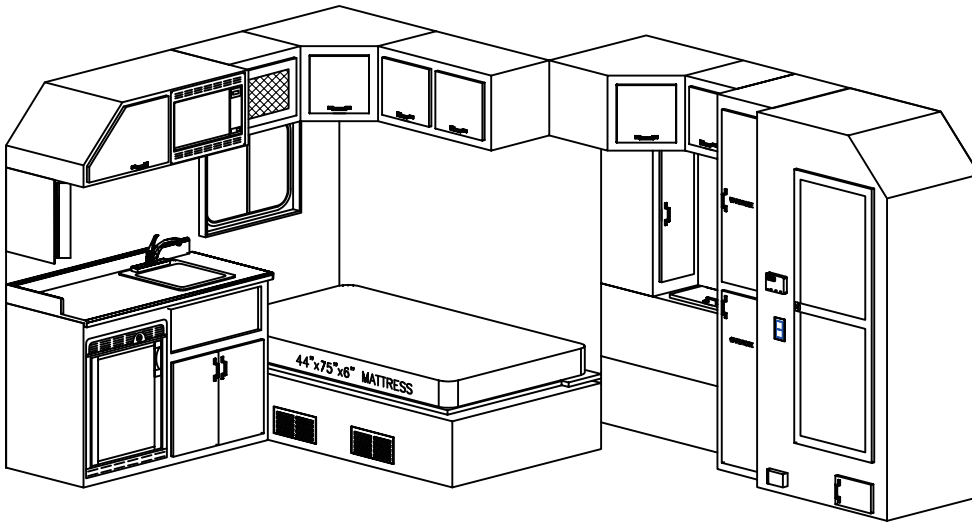
97" REAR BED (RB)



97" RB - Interior cabinets:

- * L-shaped overhead cabinet
- * Wardrobe on driver-side end of bed
- * Double door cabinet

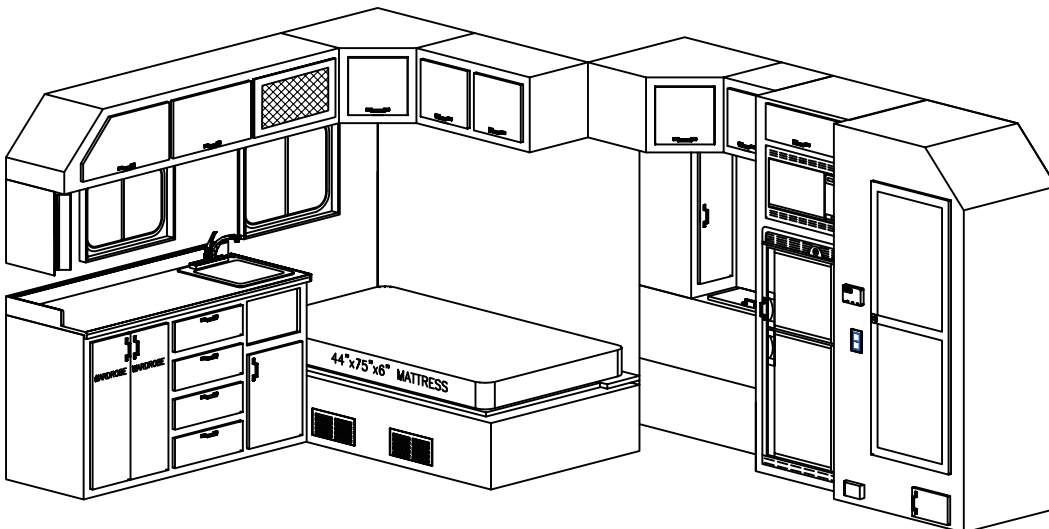
108" REAR BED (RB)



108" RB - Interior cabinets:

- * Angled U-shape overhead cabinet
- * Bunk end storage on driver-side
- * Double stack wardrobes on driver-side
- * Single door cabinet on driver-side

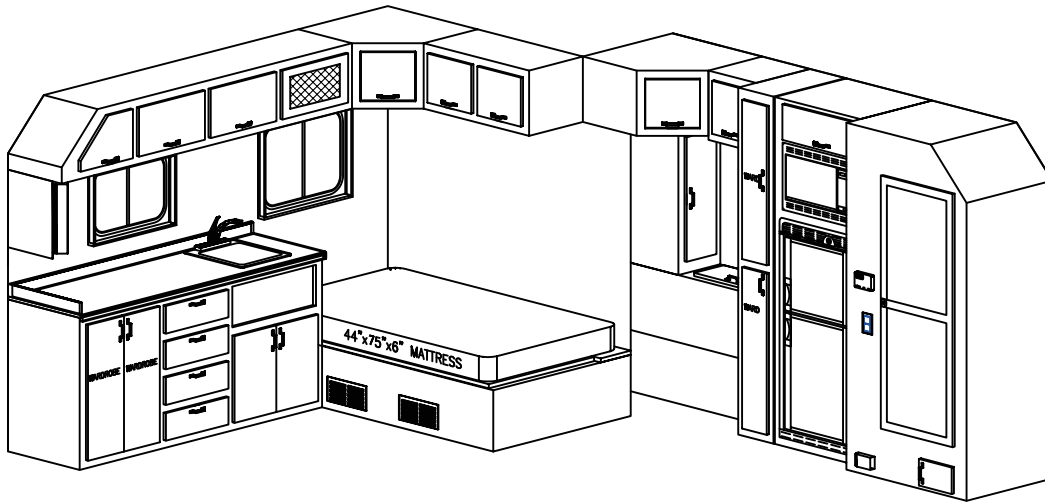
120" REAR BED (RB)



120" RB - Interior cabinets:

- * All 108" RB cabinets plus more space
- * Large Refrigerator
- * Larger countertop area
- * 4 drawers below counter
- * Double door wardrobe below counter
- * Double door overhead cabinet passenger-side

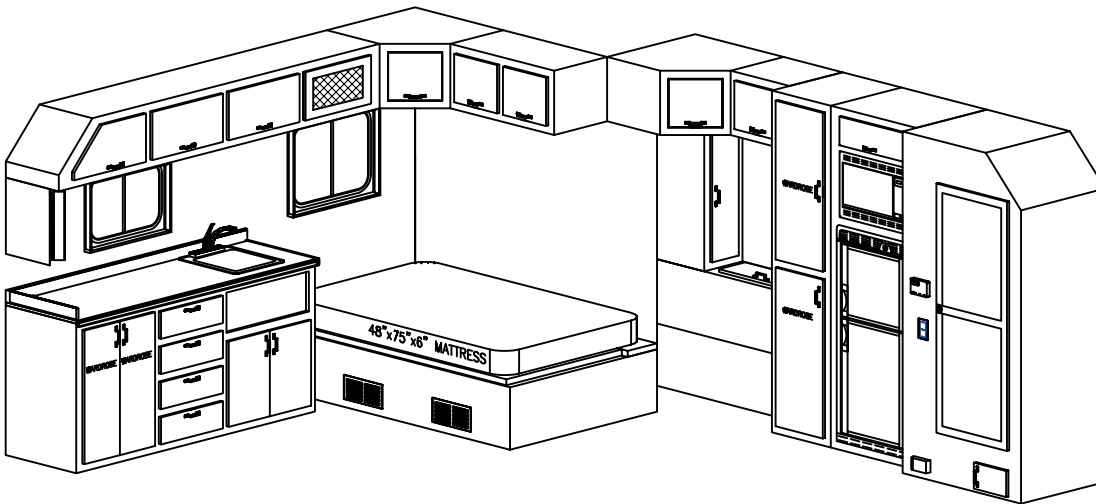
132" REAR BED (RB)



132" RB - Interior cabinets:

- * All 120" RB cabinets plus more space
- * Double stack wardrobes on driver-side
- * Larger countertop area

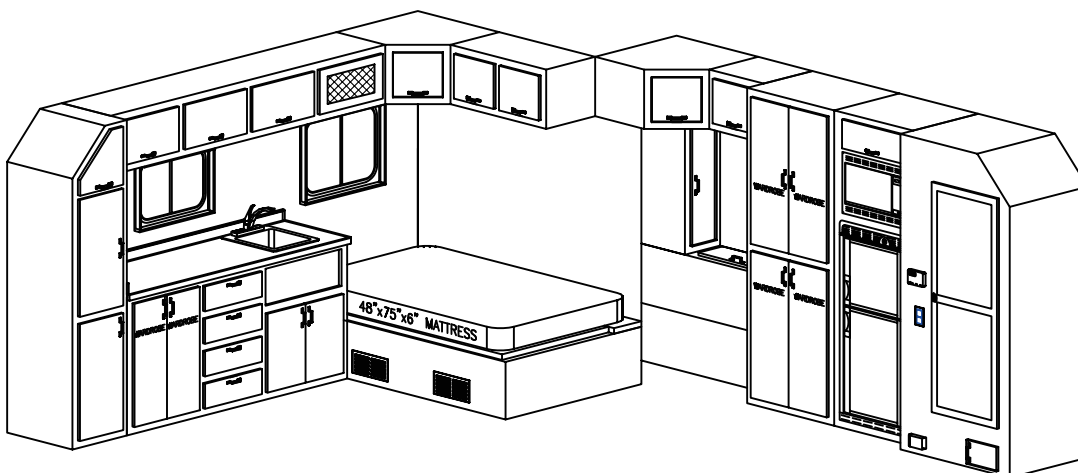
144" REAR BED (RB)



144" RB - Interior cabinets:

- * All 132" RB cabinets plus more space
- * Upgrade to 48" bed
- * Additional 8" of wardrobe space on driver-side

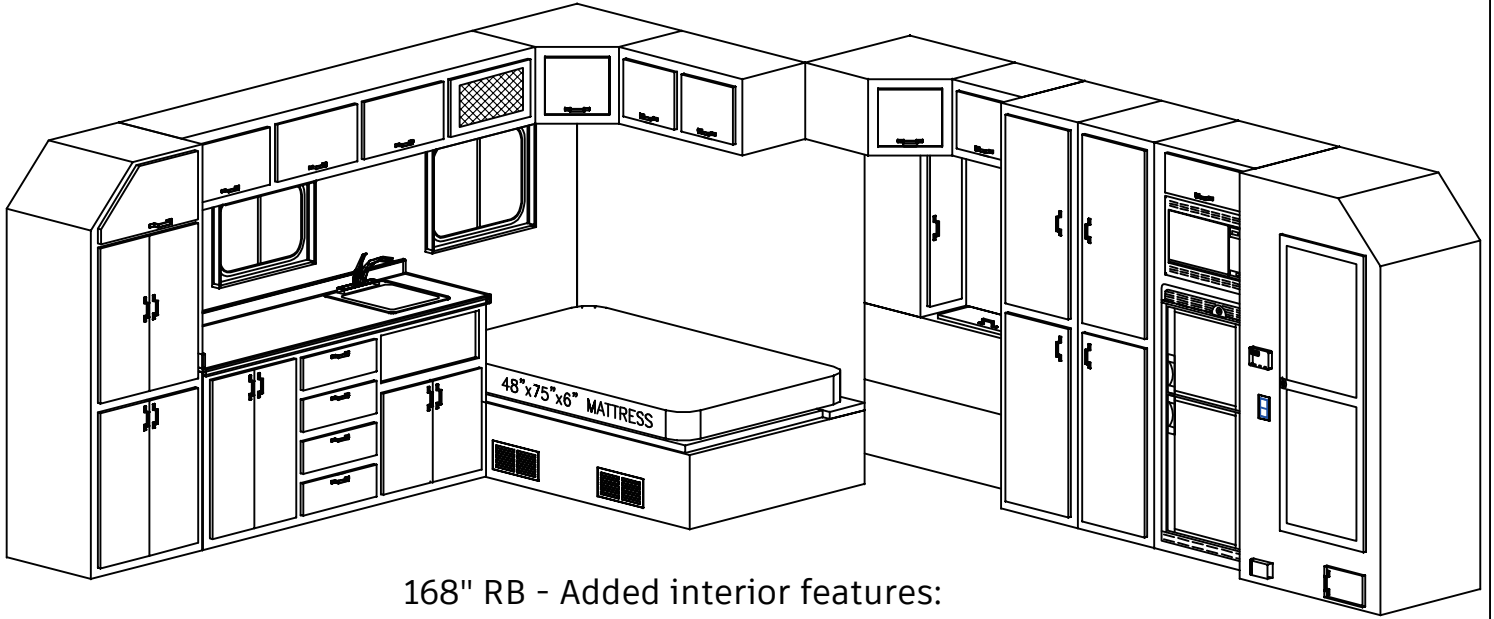
156" REAR BED (RB)



156" RB - Interior cabinets:

- * All 144" RB cabinets plus more space
- * Additional 12" of cabinet space on driver-side
- * 2 single door cabinets w/ adjustable shelves on Passenger-side

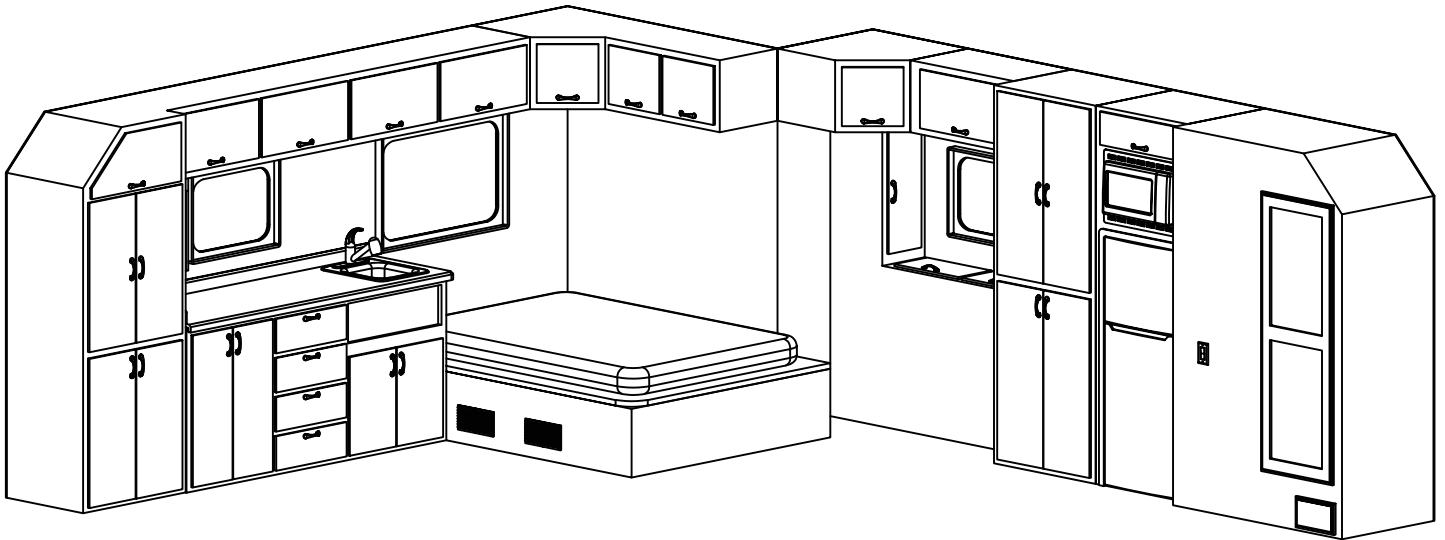
168" REAR BED (RB)



168" RB - Added interior features:

- * All 156" RB cabinets *plus* more space
- * Additional 12" of cabinet space on driver-side
- * Additional 12" of cabinet space on Passenger-side

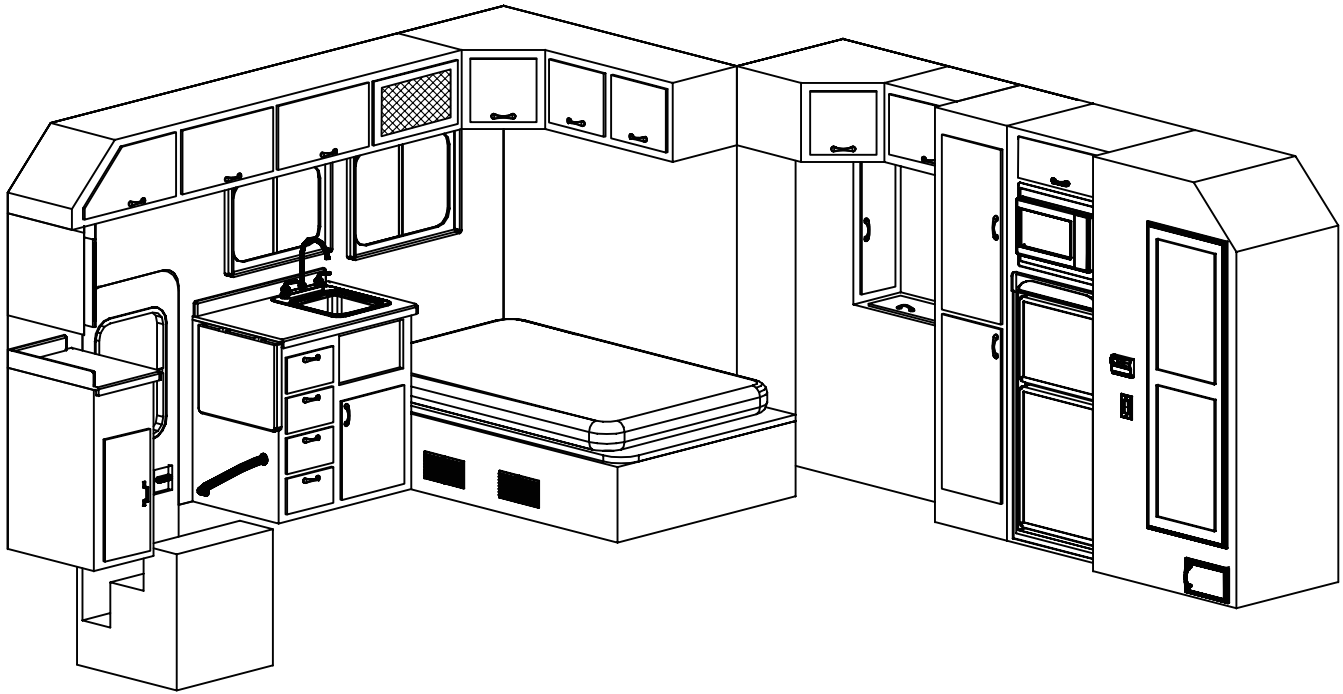
180" REAR BED (RB)



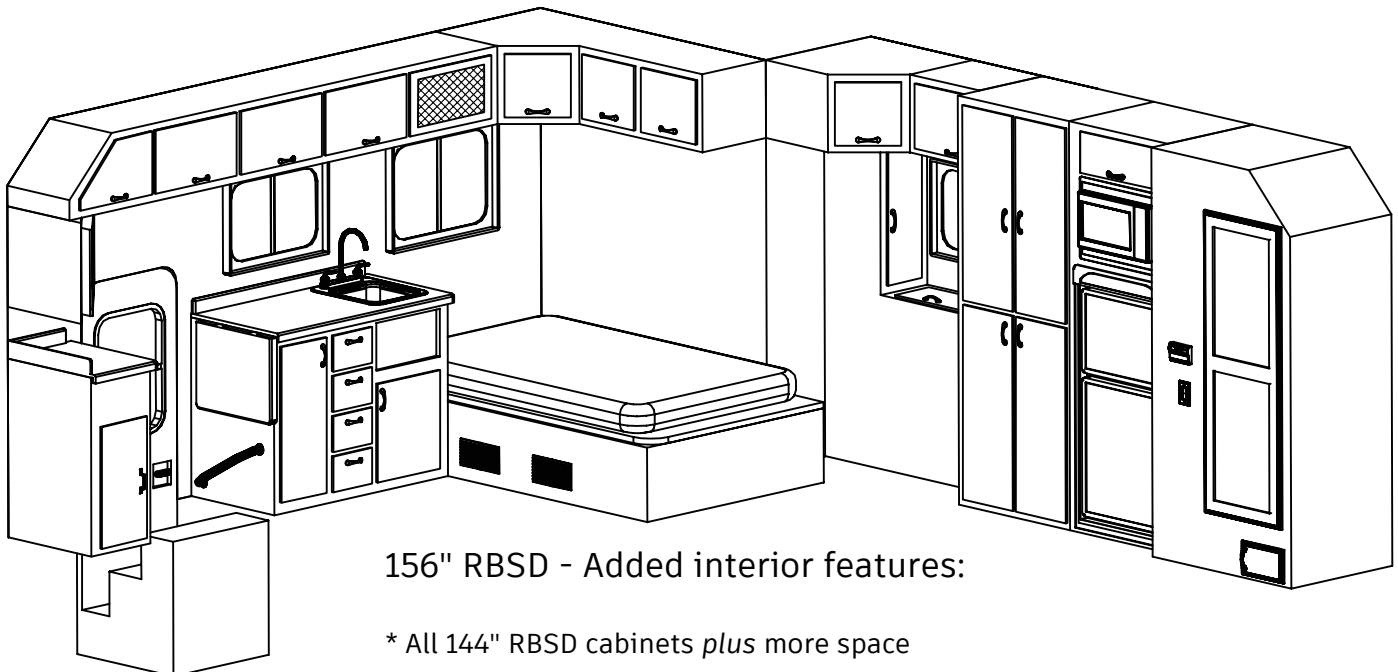
180" RB - Added interior features:

- * Additional 12" bed area w/ mattress upgrade to full size
- * Extra large shower / bath
- * Oversized window in passenger-side bed area

144" REAR BED w/ SIDE DOOR (RBSD)



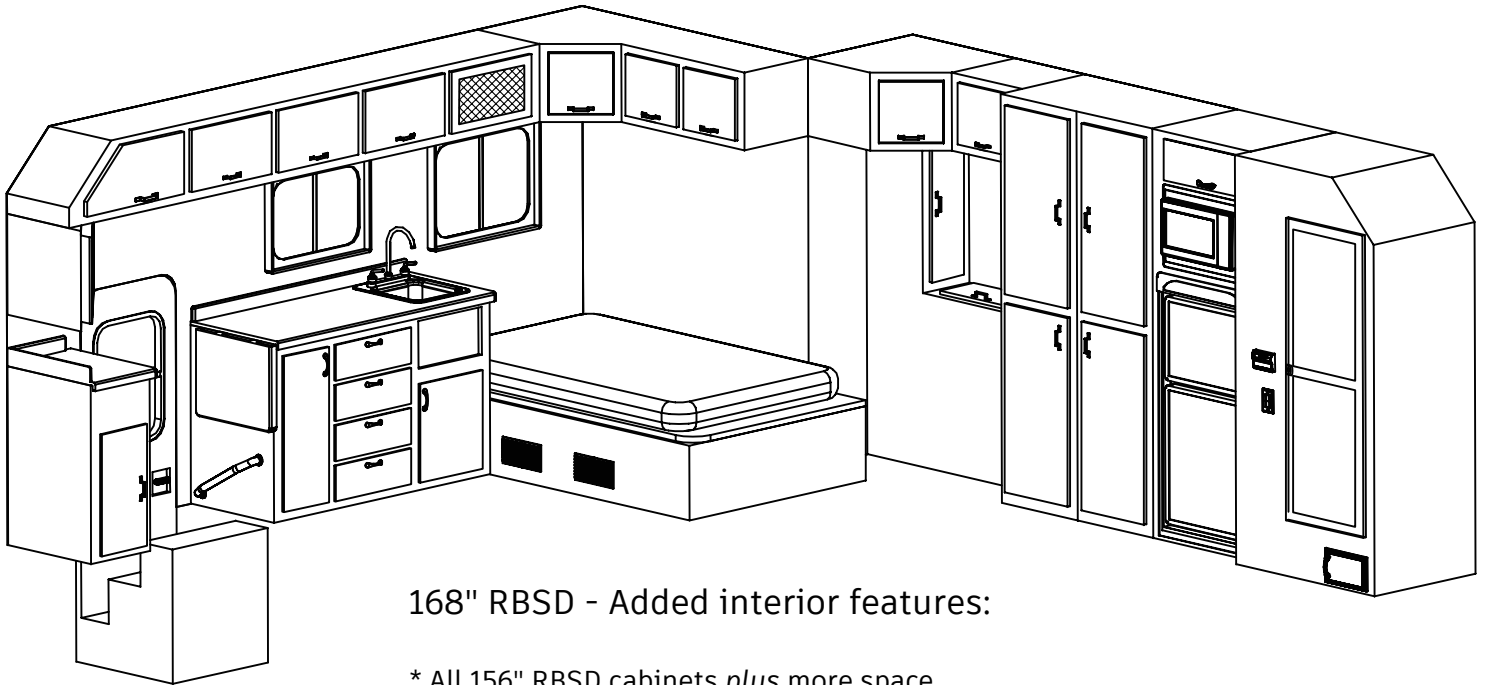
156" REAR BED w/ SIDE DOOR (RBSD)



156" RBSD - Added interior features:

- * All 144" RBSD cabinets *plus* more space
- * Additional 12" bed area w/ mattress upgrade to full size
- * 12" pull out pantry in kitchen cabinet

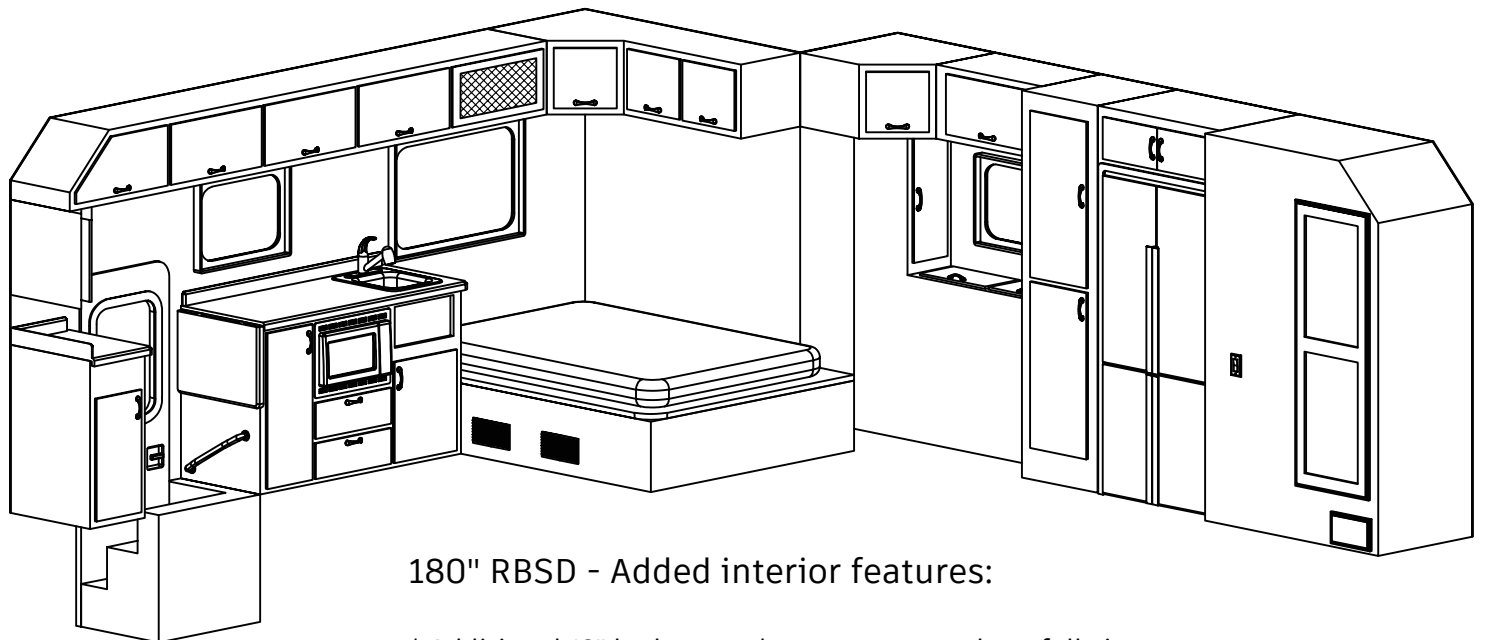
168" REAR BED w/ SIDE DOOR (RBSD)



168" RBSD - Added interior features:

- * All 156" RBSD cabinets *plus* more space
- * Additional 12" of cabinet space on driver-side
- * Additional 12" of storage in kitchen cabinet

180" REAR BED w/ SIDE DOOR (RBSD)



180" RBSD - Added interior features:

- * Additional 12" bed area w/ mattress upgrade to full size
- * Extra large shower / bath
- * Oversized window in passenger-side bed area



ARI - Legacy Sleepers

Phone: (260) 768-4704 Fax: (260) 768-4983

www.legacysleepers.com

Compare Us To Our Competition!

	Legacy II Custom Series (Included)	Legacy Custom Series (Included)	Competition (Included)	Retail Value \$
ARI Cushion Ride mounting system (We never solid mount a sleeper!).	Yes	Yes	_____	\$750
Cab to sleeper boot serviced at any Peterbilt dealer	Yes	Yes	_____	\$389
Pressure tested structure guaranteeing no water leaks	Yes	Yes	_____	\$130
1" x 2" aluminum wall studs	Yes	Yes	_____	\$335
3-1/2 inch fully insulated floor	Yes	Yes	_____	\$550
Waterproof smooth underbelly	Yes	Yes	_____	\$225
Front stainless steel corners	Yes**	Yes**	_____	\$175
304 mirror finish stainless steel (Non-Magnetic!)	Yes	Yes	_____	\$125
Stainless steel areofront	Yes**	Yes**	_____	\$235
72" rear door w/ screen and dead bolt latch	Yes ***	Yes ***	_____	\$473
Rear door porch light with interior switch	Yes ***	Yes ***	_____	\$65
Seamless gelcoat exterior walls	Yes	Yes	_____	\$250
Rain cover for roof vent	Yes	Yes *	_____	\$71
Hinged TV cabinet with storage behind TV	Yes	Yes *	_____	\$510
Remote HDMI Connections	Yes	Yes *	_____	\$97
Surround sound system with sub woofer and Blu-Ray	Yes	Yes *	_____	\$333
City water connection	Yes	Yes *	_____	\$91
Brass water line fittings	Yes	Yes	_____	\$95
Premium water lines with Stainless constant tension clamps	Yes	Yes	_____	\$125
Insulated water tank (No condensation)	Yes	Yes	_____	\$105
Water pressure relief valve	Yes	Yes	_____	\$57
Water fill hose & anti-siphon feature	Yes	Yes	_____	\$45
Climate controlled shower	Yes *	Yes *	_____	\$260
Water heater switch (20 Amp illuminated)	Yes	Yes	_____	\$45
Block heater switch (20 Amp illuminated)	Yes	Yes	_____	\$45
Battery voltage meter	Yes	Yes	_____	\$95
4/0 battery cable	Yes *	Yes *	_____	\$210
Automatic 120 volt transfer switch	Yes	Yes	_____	\$253
Heavy Duty 30 amp marine shoreline	Yes	Yes	_____	\$195
All electrical wiring encased in loom	Yes	Yes	_____	\$150
GFI kitchen receptacle	Yes	Yes	_____	\$45
Residential style rocker light switches	Yes	Yes	_____	\$35
LED glow grab handle at rear door	Yes ***	Yes *	_____	\$129
High density 10 year cushion foam	Yes **	Yes *	_____	\$113
One piece seamless fiberglass shower with toilet and holding tanks	Yes	Yes *	_____	\$2,985
Shower water diverter valve - recycle cold water	Yes	Yes *	_____	\$140
Soap dispenser installed in shower	Yes	Yes *	_____	\$35
Insulated window inserts	Yes	Yes *	_____	\$40
Premium grade residential style linoleum	Yes	Yes *	_____	\$395
Hardwood window trim with day/night shades	Yes	Yes *	_____	\$70
Auto LED lights in wardrobe closet	Yes **	Yes *	_____	\$65
Cedar lined bottom in wardrobes	Yes **	Yes *	_____	\$95
Hardwood flat or raised panel doors	Yes	Yes *	_____	\$560
MINIMUM VALUE ADDED				\$11,191

* - Included with purchase of the respective feature. For example insulated window inserts are included with the purchase of a window.

** - Included if the respective LII floor plan permits. See LII brochure for a complete listing of what is included by floor plan.

*** - Included in any floor plan that allows a rear door.

Note: Prices, specifications and included features are subject to change without notice.

Satisfied ARI Customers

We have owned 4 ARI sleepers. Everyone there from sales to all the guys in service are great. They really are like family. We would not own any other sleeper, but an ARI. They are the best. - Larry & Sarah Hendrix

Five star service and a five star product by five star people. We love our ARI sleeper and all of the people there too. Very rarely have I come across or done business with a company so centered around customer satisfaction. As far as I am concerned, there is only one custom sleeper company. That company is ARI. - Aj Van Harn

I bought this Freightliner Coronado with a 132" ARI new in Jan '09. 1,000,000 miles on the odometer and this truck still runs like new. The ARI sleeper has made all the difference in our business! It has paid for itself time and again. I can't be more appreciative of the quality of the sleeper. Everything in the sleeper is still original and still in good condition. Thanks ARI! - Ed Godfrey

I love the product, the people, and they have the best customer service hands down. - Chris & Ruth Smith

Keith and I want to thank you and your whole production and assembly crew for the beautiful job ya'll did on our sleeper. Our cabinets are beautiful beyond words. If this sleeper is as good as our first, you may never see us again...lol. We just didn't want to miss the opportunity to express our thanks. May God bless all of your lives richly. - Keith & Vickie Sampson

Doing double duty! Kicking back in an RV park in Corpus Christi while my trailer is down in Mexico for a couple of weeks at an air show. Margaritas & the beach! This sleeper is everything a guy could ask for. I know it's what everyone says, but I wish I'd bought it years ago. - Steve Wright

"Leading the Industry to Excellence"
www.legacysleepers.com